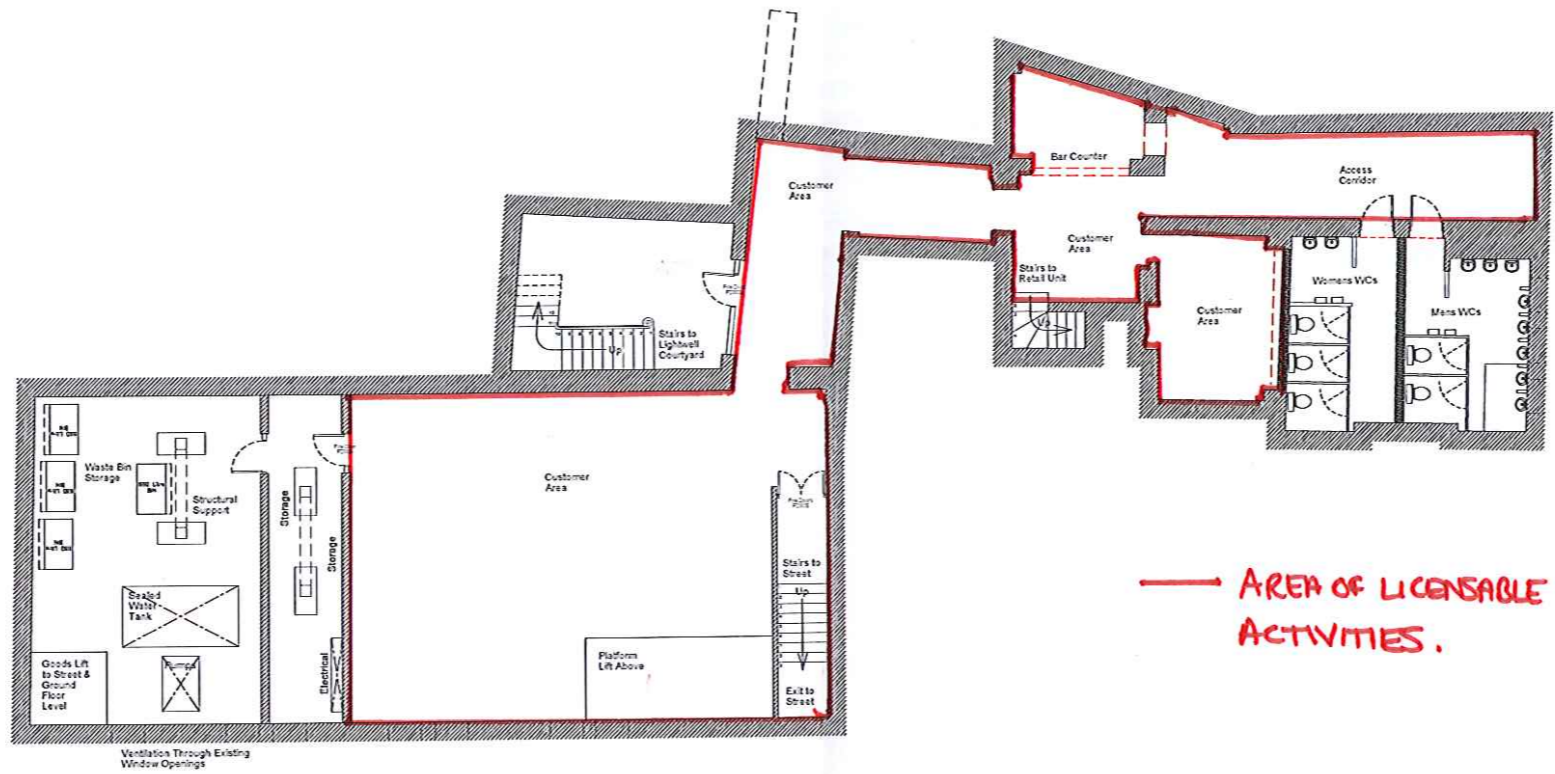


# REVISED PLAN APPENDIX B

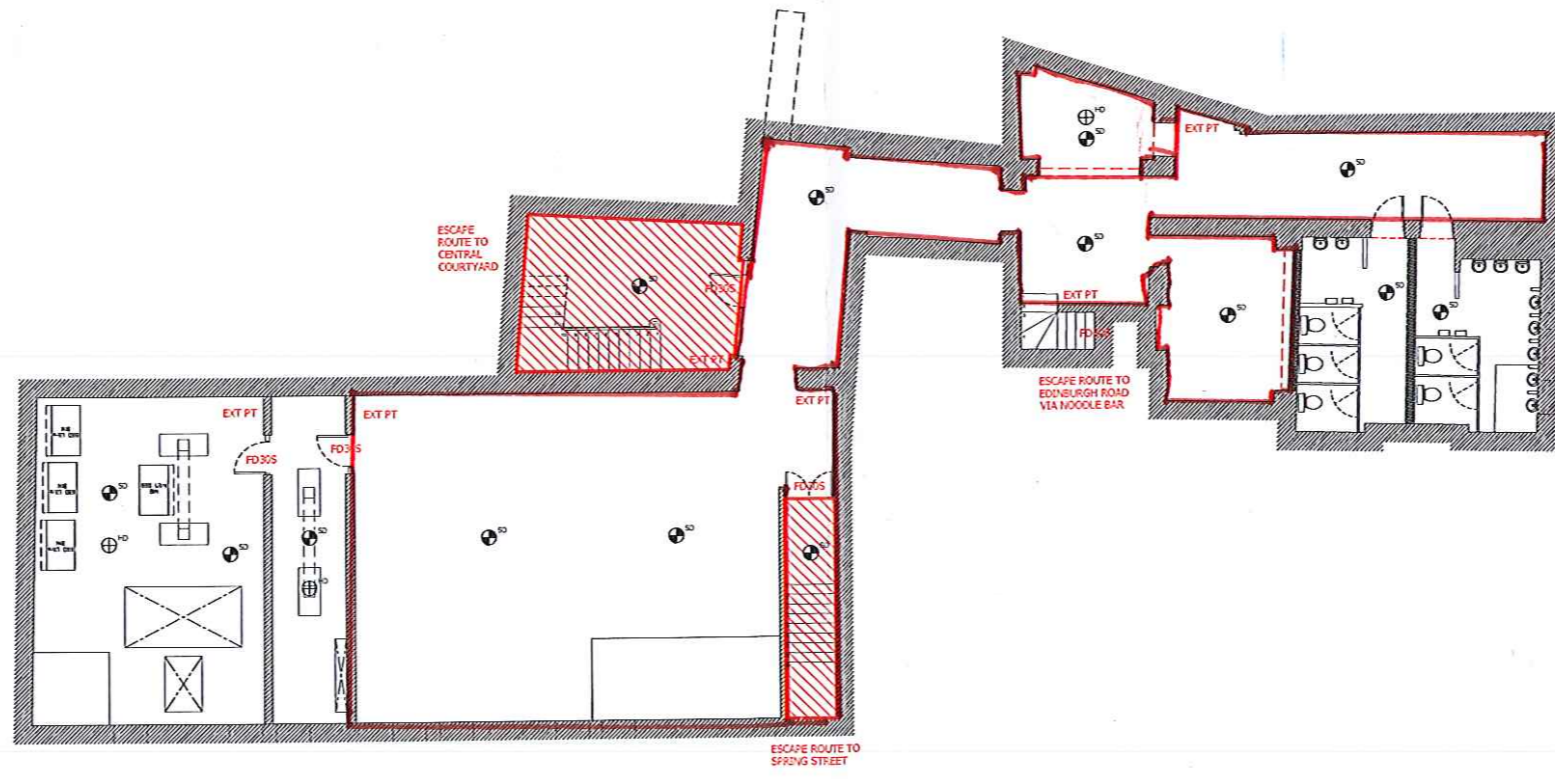
Notes: © GI Contractors Ltd

1. This drawing is the exclusive property of GI Contractors Ltd and the reproduction of any part without prior written consent from this office is prohibited.
2. In no event shall GI Contractors Ltd be made liable to anyone for special collateral, incidental or consequential liabilities in connection with the use of this drawing or associated digital data.
3. Contractor to check and verify all levels, datums and discrepancies on site and shall report any discrepancies or omissions to this office prior to start of work and during the construction phase.
4. This office cannot be held responsible for dimensions and details of parts and equipment supplied by third party manufacturers. Such details to be verified by the contractor prior to commencement of work.
5. This drawing is to be read and understood in conjunction with structural, mechanical, electrical and/or any other consultant's documentation as may be applicable to the project prior to start of work and its duration.
6. Measurement scaling of this drawing shall only be performed in its digital form. Do not scale directly from the drawing.

Revision	Detail	By	Date
A	Preliminary	AB	25/05/17
B	Fire Strategy Added	AB	05/06/17



Proposed Basement Layout



Fire & Escape Strategy

**KEY:**

- Protected Escape Route With 60 Minute Fire Protection
- Doors Fire Rated to 30 Mins With Self Close
- Fire Extinguisher Location
- Smoke, Heat Detectors

Fire Detection to at least BS 5839- Pt 6:2004  
Fire Alarm System to at least BS 5839 - Pt1: 2002

Plans 1:100 @ A1  
1 0 1 2 3 4 5 6 7 8 9m  
1:100

This Drawing Can Be Scaled For Planning Purposes

**GI Contractors Limited**  
St Helen's Parade  
Southsea  
Hampshire PO4 0RN

Project: Fountain House  
Location: Portsmouth  
Drawing: BASEMENT FLOOR PLAN  
Status: Proposals

Drawing Number: 127      Revision: B  
Scale: 1:100 @ A1      Date: May 2017  
Drawn By: AB